

2016 Annual Report
LOCATION | WORKFORCE | VALUE

A LOOK BACK AT 2016

Working Together for The Future of Our Community.

2016 was a record year for private capital investment within the industrial sector of Huntington County, Indiana. Our clients invested over \$40 million and committed to retaining and creating hundreds of jobs. The unemployment rate in our county started the year at 4.6% and ended the year at 3.5% after having peaked at 5.0% in March of 2016.



The resiliency of the local economy in Huntington County, Indiana never ceases to amaze me.

Non-industrial projects were also abundant in our county. Gateway corridor improvements; neighborhood and downtown revitalization projects; highway construction; airport construction; parks & recreation projects; trails and greenways are just a few of the wonderful things happening in our county.

The year saw the completion of the county's \$1.4 million Learning Center become reality. The new facility is a great place for incumbent workers, students and others to acquire the relevant certifications and job skills needed in the 21st Century economy.

Economic Development efforts are best described as a "team sport." I'm honored to be part of the team in Huntington County, Indiana.

A handwritten signature in black ink that reads "Mark Wickersham". The signature is fluid and cursive, with a large, sweeping initial "M".

Mark Wickersham
Executive Director

2016 CLIENT PROJECTS



Continental Structural Plastics Corporation

Client Projects

- Bendix Commercial Vehicle Systems
- Continental Structural Plastics Corporation
- Echo Lake Foods Corporation
- Ecolab Corporation
- Huntington Aluminum, Inc.
- Huntington Sheet Metal, Inc.
- Incipio Devices, Inc.
- Keystone Automotive Industries, Inc.

Additional Activities

- Automotive Communities Partnership Conference, Detroit, Michigan
- Automotive Communities Partnership, Ford Plant Tour, Avon Lake, Ohio
- Site Due Diligence
- City of Huntington Departmental Leadership Meetings
- City of Huntington Regional Cities Support
- Huntington Chamber EDGE Program
- Huntington Municipal Airport Board of Aviation Commissioners
- Huntington University Foundation
- IEDC Training Conference, Cleveland, Ohio
- Kiwanis Club Luncheon Speaker
- Learning Center Steering Committee
- NE Indiana Building Contractors Association
- NE Indiana LEDO Council
- NE Indiana Regional Cities Coalition
- North American International Automobile Show, Detroit, Michigan
- Regional Development Authority
- Warren Chamber
- Workforce Development Grant Collaboration with Kosciusko & Wabash Counties



ECONOMIC IMPACT



Huntington's Commercial Road Industrial Park

9-Year Economic Impact Summary

Year	# of Projects	Private Investment	New Jobs	Retained Jobs
2008	10	\$29,031,000.00	159	60
2009	9	\$35,425,000.00	449	257
2010	6	\$34,649,000.00	444	648
2011	13	\$32,085,736.00	132	970
2012	8	\$20,644,130.00	166	1,313
2013	12	\$37,997,400.00	250	909
2014	15	\$34,873,010.00	365	1,814
2015	14	\$23,633,234.00	62	1,575
2016	8	\$40,271,400.00	167	1,083
TOTALS	95	\$288,609,910.00	2,194	8,629

2016 Vital Statistics Summary

2016 Agency Expenses (preliminary/un-audited) - **\$249,626.51**

8 Client Projects

\$40,271,400.00 Client Capital Investments

167 New Job Commitments

1,083 Existing Jobs Retained

January 2016 Unemployment Rate – **4.7%**

January 2015 Unemployment Rate – **6.7%**

December 2016 Unemployment Rate – **3.5%**

Industrial Building Occupancy Rate – **96%**

Target Industry Clusters

- Advanced & precision manufacturing
- Agriculture
- Aluminum melting & fabrication
- Aviation
- Food processing
- Logistics
- Metal/Steel fabrication
- Mineral aggregates
- Petroleum refining and distribution

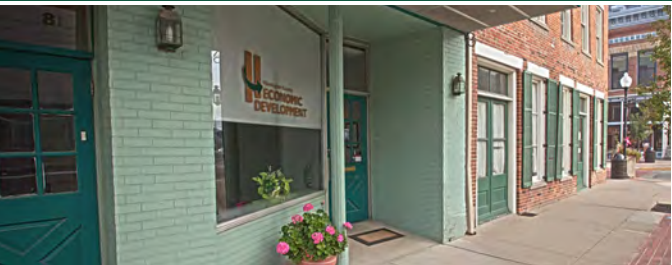
2016 BOARD OF DIRECTORS

MEMBER

REPRESENTING

Perry Collins	Town of Roanoke
Brooks Fetters	Mayor, City of Huntington
Kyle Hamilton	Member at Large/TREASURER
William Johnson	Town of Andrews
Kevin Killen	Member at Large/VICE PRESIDENT
Steve Kimmel	Huntington County Chamber of Commerce
Teresa McClellan	Member at Large
Seth Marshall	Huntington City Common Council
Kendall Mickley	Huntington County Council
Lee Pasko	Lime City Committee
Greg Smitley	Member at Large/SECRETARY
Jeff Souder	Town of Warren
Jeff Stockman	Town of Markle
Tom Wall	Huntington County Board of Commissioners
Ryan Warner	Member at Large/PRESIDENT
Brian Warpup	Huntington County Community School Corporation
Michael Zahn	Member at Large

Lime City Development Committee



Lee Pasko, 2016 President Lime City Committee

The Lime City Committee serves as a standing committee of Huntington County Economic Development Corporation, raising awareness of economic development activity in the City of Huntington. The 2016 Committee Members enjoyed luncheons and facility tours at various locations including:

- Continental Structural Plastics
- Onward Manufacturing Company
- Novae Corporation
- Huntington Municipal Airport
- Irving Materials – Erie Stone Facility
- Echo Lake Foods Corporation

THANK YOU

To Our Private Investment Partners

Auto Truck Group, LLC

Bendix Commercial Vehicle Systems

Bippus State Bank

Building Contractors Association

Bolinger's Propane Service

Citizens Telephone Company

Continental Structural Plastics

Duke Energy Indiana

East of Chicago Pizza, Warren, Indiana

First Farmers Bank & Trust

First Federal Savings Bank

Gerdau Steel

Hagerman Group, Inc.

Heartland REMC

Heritage Pointe

Huntington Aluminum

Indiana & Michigan Power

Isolatek International

Jay Buzzard

Jeff Souder

JJ's

Kevin Killen

Kyle Hamilton

Midwest Pipe & Steel

M & S Powder Coating, LLC

Northeast Indiana Regional Partnership

Novae Corporation

Parkview Huntington Hospital

Perry Collins

Smekens Education Solutions, Inc.

Star Excavating

The Zacher Company

Thorne Insurance Agency

Warren Service & Supply Company

Wayne Metals, LLC



Local Business Development Brings a Higher Quality of Life

WHY HUNTINGTON?

Location

Huntington County is ideally located in the heart of the Great Lakes region with easy access to Indianapolis, Chicago, Detroit, Cincinnati and Louisville thanks to our many transportation assets:

- Norfolk Southern Rail
- I-69 NAFTA Corridor
- U.S. 24 Hoosier Heartland Industrial Corridor
- U.S. 24 Fort-to-Port Corridor
- Fort Wayne International Airport (FWA)
- Huntington Municipal Airport (HHG)



Workforce

Our highly-skilled workforce and pro-business environment have convinced several international giants to locate multimillion-dollar facilities here. They include:

- Brazil – Gerdau Steel, Huntington
- Canada – Onward Manufacturing
- France – Schneider Electric
- Germany – Bendix Commercial Vehicle Systems
- Japan – Helena Chemical (a division of Marubeni Corporation)

Value

Compared to major metropolitan markets, the cost to acquire and renovate a building in Huntington County is much less—as is the cost of a greenfield site or a skilled workforce. The bottom line? Your dollar goes further here.



Growth Continues at the Markle Industrial Park

Huntington County Economic Development is your ally in site selection and development.

MISSION _____

To maintain a unified economic development effort throughout Huntington County in order to promote opportunities for new job creation and capital investment in Huntington County.

VISION _____

To make Huntington County a better place to live and work.



8 West Market St.
Huntington, IN
(260) 356-5688
mark@hcued.com



www.hcued.com
